

MERRYMEETING PARK 1898 Brunswick, Maine



by Christopher B. Gutscher



I would like to thank Earl Ormsby, Sr. for his help and encouragement in this project. I would also like to thank the following people and organizations for their time, help and loan of materials: Bette Copeland and Lena Browne of the Pejepscot Historical Society, Gordon Struble of the Patten Free Library, Brian Damien of the Curtis Memorial Library, and Dianne Gutscher of Bowdoin College Special Collections. Margaret Erswell, Charles Hazeltine, Roy Lawrence, Carl Libby, Mel Robbins, and Norman Simard were also helpful. Thanks also to my wife Dianne for the editing.

*Designed by Bill Fall
Printed by Golden Offset, Inc.
Bath, Maine 1985*

Front Cover Photo

This clambake at Merrymeeting Park in 1904 celebrated the one hundredth anniversary of Solar Lodge 14, A.F. & A.M. Seen from left to right are: N. Gratz Jackson (Master), Arthur White, William Hodgkins, Walter Shaunessy, Edward Lee, Charles Thayer, and John Martin.

MERRYMEETING PARK 1898 Brunswick, Maine

Introduction

by Christopher B. Gutscher

Less than a century ago Merrymeeting Park was one of the largest and best known recreation areas in the state. Sadly, many Brunswick residents have never heard of it or have only the slightest idea of what it was like in its prime. This booklet, mostly through materials reprinted directly from park literature, post cards, and actual photographs, may help us appreciate its past. I have tried to keep my contribution to this project editorial, letting the programs and advertising speak directly. The English usage and advertising claims are sometimes amusing and much can be read between the lines.

Page 14 is a reproduction of a three foot high broadside that would have been posted on buildings, fences, etc. The "Souvenir" on page 15 is from a booklet the park published. Page 16 is a somewhat smaller broadside. The 5 page *Programme* on pages 17 - 21 would have been distributed at the park and served as a kind of guide. The newsclipping on page 22 is from the Bath Independent while the Park Notes are extracted from another *Programme*. The item from the *Saturday Club* is from their yearbook for 1900.



Most visitors arrived at the park on the trolley that stopped at the long building on the Bath Road. They would then walk into the park on the curved portion of the entrance ramp that crossed the steam railroad tracks. The wide, straight portion of the ramp was used by teams and horses.

1898 1906

3 years

A Brief History

Amusement parks at the turn of the century were an important part of the trolley lines throughout this country. They added to the revenue of the trolley companies by providing another reason for riding the "electrics." They were in themselves destinations and offered a recreational reason for using the trolleys. Merrymeeting Park in Brunswick, like Casco Castle in South Freeport and Riverton Park in Portland, was just such a place.

Merrymeeting Park was situated on about one hundred forty acres of land bordering the Androscoggin River and the Bath Road. The land had previously been a shipyard and sawmill. As developed by Amos F. Gerald of the Lewiston, Brunswick and Bath Street Railway, the park contained a casino, zoo, refreshment stand, open air amphitheater, large pond with a dance pavilion, as well as many miles of woodland walks complete with bridges over numerous streams. Boats were available for rowing on the pond, and arc lights lit the bridges and walks.

The Park opened in July of 1898 with a reported ten thousand people that first day. They came on foot, by boat, by horse and buggy – but mostly they came by trolley. The five cent fare from Brunswick included admission to the grounds; trolleys ran every half hour throughout the day, sometimes two and three coupled together. Running time from Lewiston would have been about one and a half hours, and Portland would have been a scenic but bumpy two hour trip. The main entry to the Park was a ramp over the steam railroad tracks on the Bath Road.

The casino, situated on the highest point on the grounds, was thought by many to be the main attraction, with its view up-river probably the most admired. It even boasted a view of the White Mountains on clear days. By scaling photographs of the building, it appears to have been about two hundred feet long and at least sixty-five feet to the top of the cupola. It had four stories, two of which had verandas, plus the cupola, all on a nine foot high stone foundation. The dining room could, from reports, serve one hundred people at a time with as many as six hundred eating on a good Sunday.

The open air amphitheater could accommodate over four thousand people with seating on benches in two different sections. Two log cabins on either side of the stage served as dressing rooms and fit nicely into this woodland setting. Here, big name vaudeville acts, various band concerts, and occasional Sunday morning sermons were heard. Reserved orchestra seating was ten cents.

Other attractions and activities in the Park were the boat house museum, the fireworks and balloon ascension on July 4th, a pair of white diving horses, picnics, dances, meetings, greased pig contests, and almost anything else imaginable in such large, well-groomed grounds.



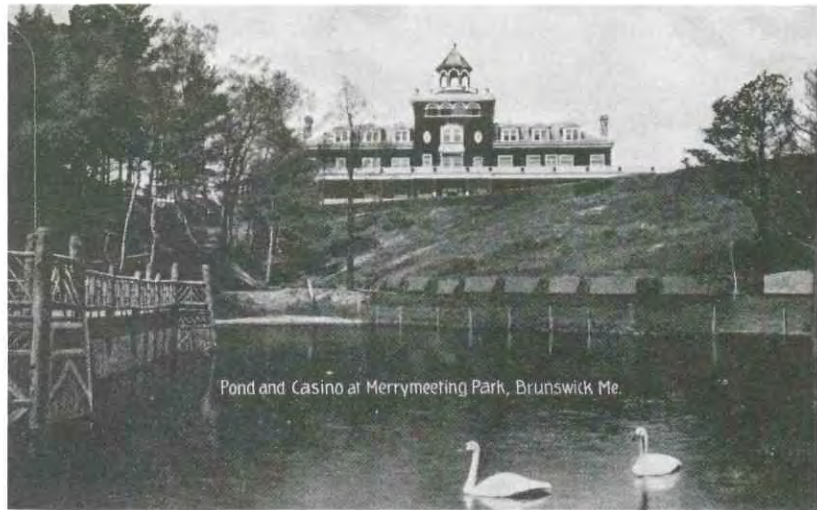


This post card of the casino is the most remembered and probably shows it to the best advantage. The view from these windows would have been upstream with the Brunswick and Topsham sides of the river separated by Cow Island. Note the similarity of the attached castle-like structure to the Casco Castle in South Freeport, also built by Mr. Gerald.



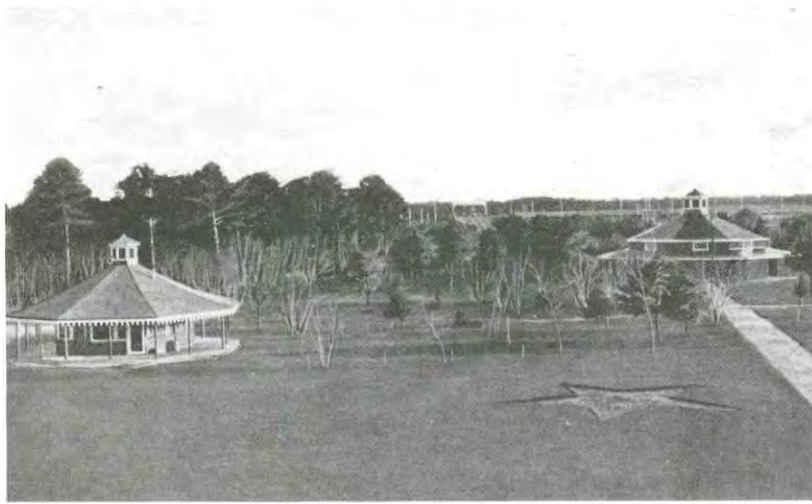
This is the other side of the casino on a crowded afternoon as seen from the entrance road. The size of the building can be approximated by the relative height of the people on the porches.

One side of the dance pavilion is seen on the left of this post card. Route 1 now runs near the spot from which this photo was taken and the hill in the left background is easily seen from the present road.



A stylish couple stops for a photograph on the casino steps. They could be Nellie and Joe from the hit song of 1904 "Wait 'till the sun shines Nellie".





This view from the casino porch shows the zoo on the right and the round house on the left. Route 1 now passes over the site of these two buildings. Barely discernible on the horizon is the entrance ramp.

This is another view of the round house where snacks were sold and basket boys stocked up to sell refreshments all over the park grounds. The building replaced a tent that served the same purpose; neither are shown on the park map.

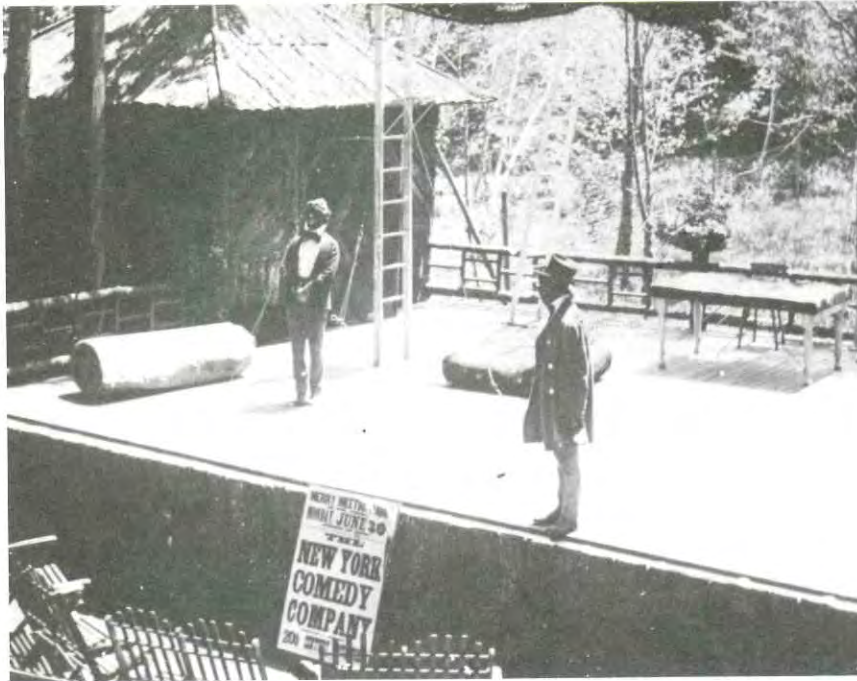


One of the service vehicles is shown near the superintendent's house. On the front of the trumpeter's hat is "MERRYMEETING PARK AMPHITHEATER."



Up the Androscoggin from Merrymeeting Park, Maine.

The view from one of the upper floors of the casino appears here. Brunswick is on the left, Topsham on the far right, and Cow Island with the barn is right of center. The tide is out.



The stage of the amphitheater appears as it would have been seen from the better seats. In the lower photo, Marie De Rosett appears to be twirling a Civil War rifle with bayonet attached.

Some of the myriad other vaudeville acts to grace the stage were acrobatic bull terriers, a rolling globe artist, and the ever popular ladder act.

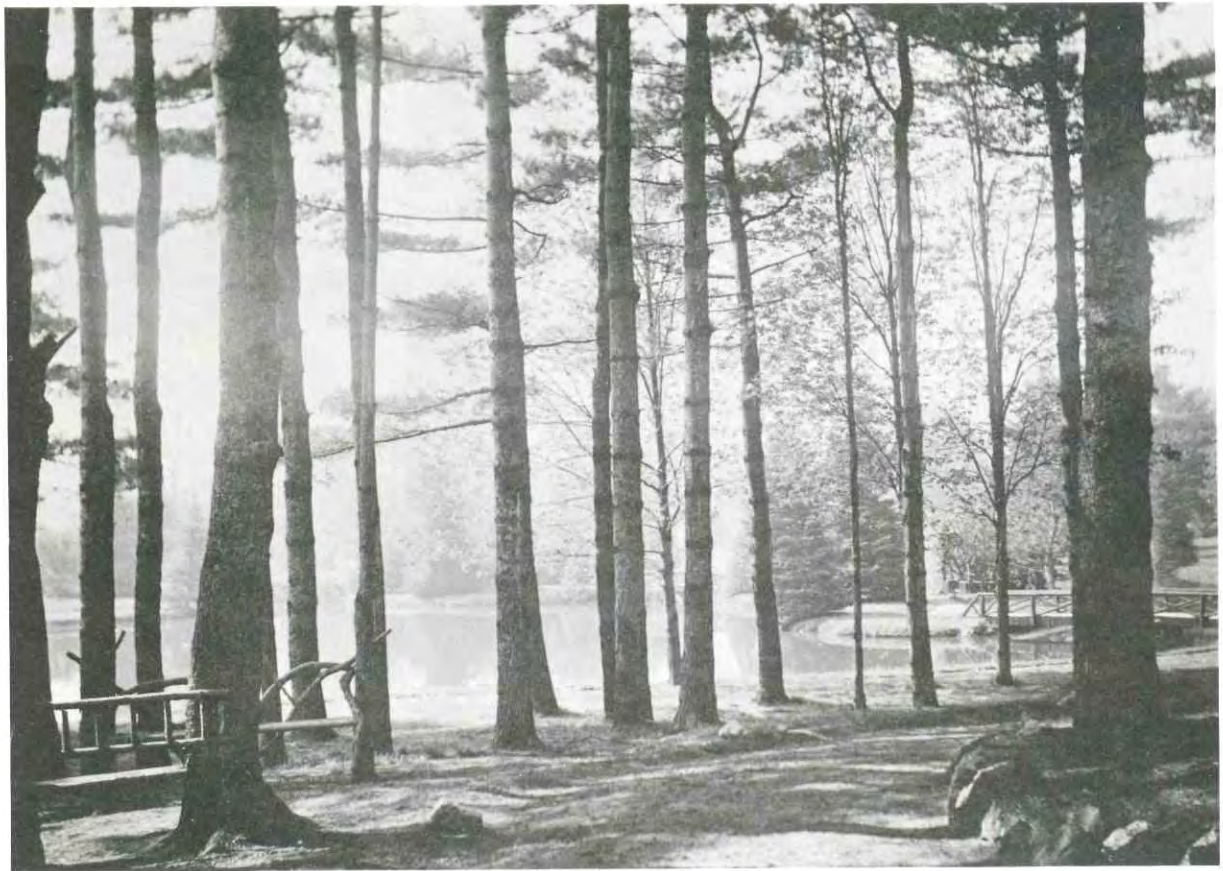




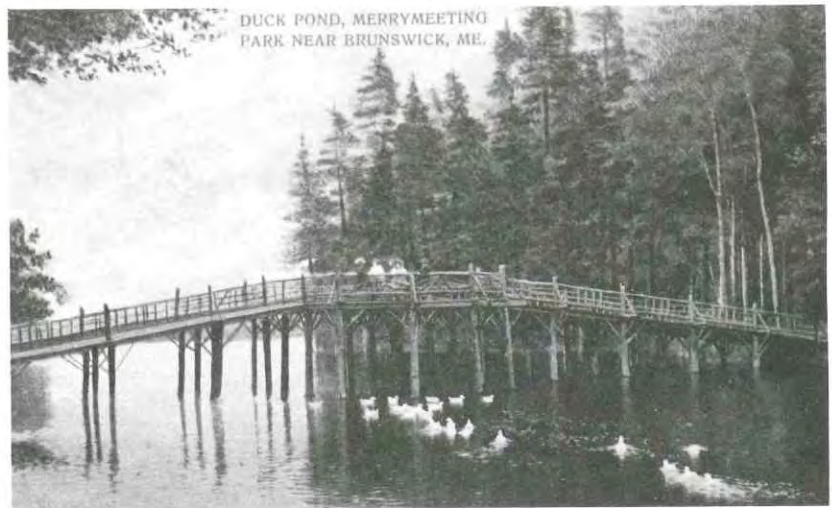
This post card shows the audience and the stage with two seated musicians. The buildings on the sides of the stage were the dressing rooms. Look carefully for the upright piano on the right and the acrobatic rings on the left.



The white horse diving from a ramp would have been located before the zoo on the left as you came into the park.

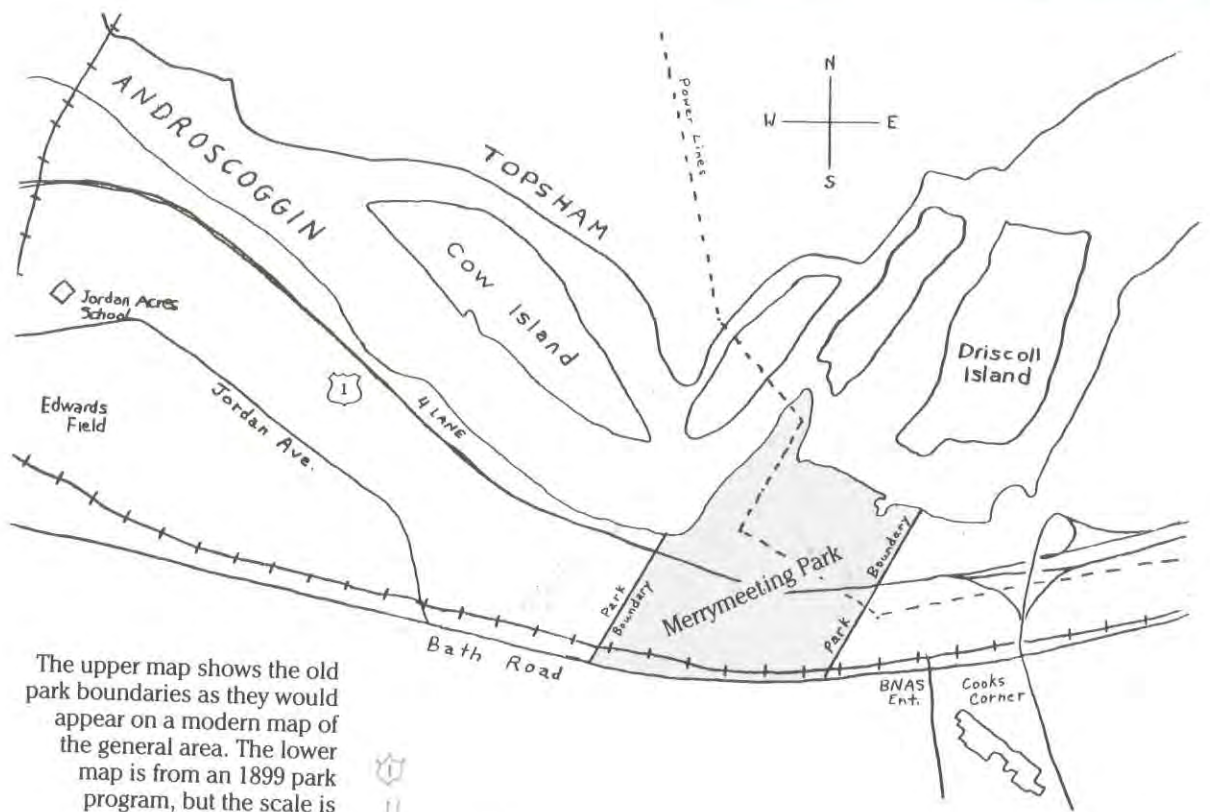


The woodland walks, ponds, and bridges were among the more restful aspects of the park. This bridge was quite wide, judging from the number of supports and the people sitting in the middle of it.

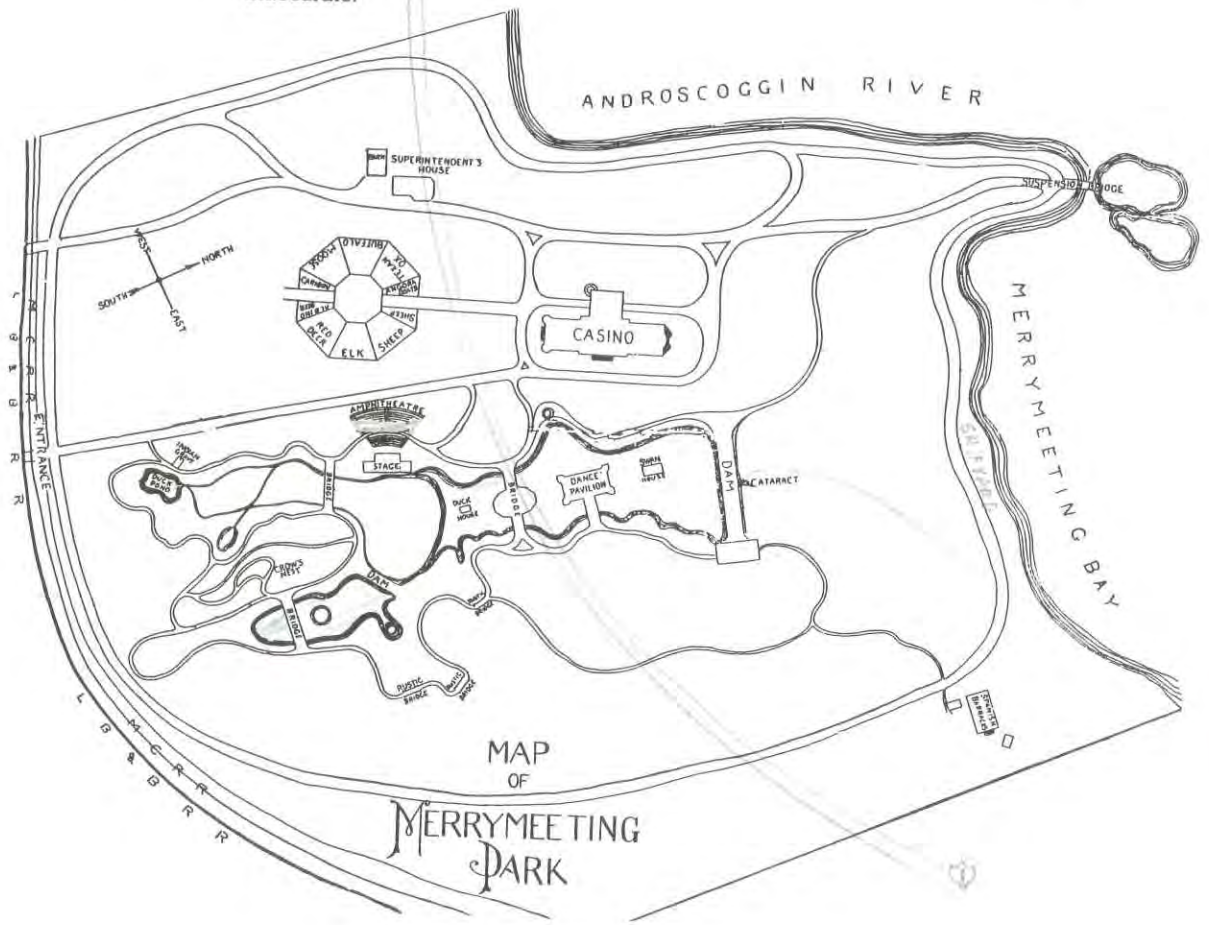




These two different views of the dance pavilion show its woodland setting very well. The park was open until 11 P.M. and the dance floor was lit by carbon arc lights.



The upper map shows the old park boundaries as they would appear on a modern map of the general area. The lower map is from an 1899 park program, but the scale is inaccurate.



ADVERTISEMENTS &
MEMORABILIA



REV. ELIJAH KELLOGG

Will Deliver one of his Interesting Sermons

MERRYMEETING PARK
SUNDAY AFTERNOON, 3.30 O'CLOCK



Yours truly, ELIJAH KELLOGG.

SUBJECT:
THE BETRAYAL OF CHRIST

MATTHEW 27: 3-5.

SOUVENIR of Merrymeeting Park

BRUNSWICK, MAINE  MDCCC

A day of rest and recreation where nature smiles her sweetest, with quiet walks through wooded paths, breathing the fragrant odors of the evergreens, a seat in some shady dale, listening to the music of the song birds as they flit from tree to tree, with an hour's divertisement in the way of some pleasing entertainment in the open air is appreciated by all mankind.

No place in New England, perhaps in the whole world, is better fitted for a day's outing than Merrymeeting Park in Brunswick, Maine. Nature herself, made this an ideal spot for such a park. In its 150 acres are crowded hills, dales, woods and open fields with here and there a pretty little pond. Here one of the leading landscape architects of the world, aided by the able officials of the Lewiston, Brunswick and Bath Street Railway, conspired with nature to make this a recreation ground where tired humanity, from all walks of life, can at frequent intervals and at small expense, rest and recreate wearied minds and bodies away from the busy, dusty, noisy city.

Merrymeeting Park is situated in the outskirts of that beautiful, historic town of Brunswick, Maine. It is reached by the electric cars from all points on the L. B. & B. system, the ride on the open cars being a most pleasing feature of a day's outing.

As one enters the main avenue, he is first attracted to the animal cages. No expense has been spared in establishing the wonderful Merrymeeting Zoo, and the result is one of the largest and most remarkable exhibitions to be found on this continent. Ample space has been provided and there are exceptional facilities for observing the animals in the different cages. The visitor may walk freely around each cage and from one cage to another in the open air, thus seeing the animals to the best advantage. Each variety is described by signs upon the cages so there is never any doubt as to the identity of the animals. The large circular zoological building is the centre of the most notable features of the Zoo. High wire fences radiate from the central building, forming large enclosures for the various animals.

Just over the hill, northwest from the Zoo, is the old Bowdoin Boat House filled with one of the finest exhibitions of stuffed birds, animals and reptiles in this country. They are very cleverly arranged and mounted. Here also, are relics of historical interest and a number of racing shells of famous Bowdoin crews, members of which have long since filled high positions in the world's doings. One can well spend hours in this building to his own profit and pleasure.

Beyond the Zoo, surrounded by broad lawns and exquisite flower beds, is the magnificent Casino Building, presided over by James A. Fuller a man of large experience in the hotel business. Broad verandas extend entirely around the building. Inside, the first floor is fitted for dancing and entertainments, and a most palatial room; large open fireplaces are tastefully placed in either end. The second floor is devoted to the dining rooms, there being one large room and six private dining rooms. The view from the windows is one of pleasing beauty, which, together with the delightful orchestra music, makes dining here a delight to all. Above the dining room is the roof garden, and still higher the observatory where cool breezes blow and a most beautiful panorama opens to the eye; green fields, woodland, rivers and ponds, scenes which make the world seem brighter and better and one thankful for having lived in it. To the west the view extends for miles up the charming Androscoggin Valley, to and beyond Brunswick Town so far as eye can see; to the north-east the beautiful Merrymeeting Bay, from which the Park derives its name. This is perhaps the most entrancing scene. The Bay with its countless little isles with their sandy shores, the waters winding in and out among them, while beyond, green fields, forests and hills stretch out till they meet the horizon and are lost to view.

Each afternoon and evening in the "Theatre in the wood" a most pleasing entertainment of an hour and a half may be enjoyed. Between the Casino and the Theatre, among the trees, whose wide-spreading branches furnish a roof of green, swings are placed, which are well patronized.

Across the lake from the Theatre, is woodland, and to many the prettiest part of the Park, abounding in pretty walks, rustic bridges and here and there comfortable seats in retired nooks. Points of interest in this part are the Spanish Barracks, the Crow's Nest and Duck Pond. A little south of the Theatre is the historic Indian grave. The immensity of this Park makes it possible for parties to mingle with the throngs of daily sightseers or to find absolute quiet and solitude at will. Surely, a day at Merrymeeting is one of great pleasure and profit for young or old.

OLD HOME WEEK

BRUNSWICK.

FIREWORKS!

TO BE GIVEN AT

Merrymeeeting Park, Thurs. evening, Aug. 9

UNDER THE MANAGEMENT OF THE OLD HOME WEEK COMMITTEE.

Programme.

- 1.—Salute of Three Aerial Guns, fired from mortars to the height of 500 feet, and exploding with loud reports.
 - 2.—Illumination of the grounds, with Twelve Powerful Lights, changing color three times in burning, showing red, white and blue.
 - 3.—Ascent of Two Large Balloons (weather permitting) carrying magnesium lights, flooding the entire neighborhood with dazzling light, finishing with a string of jewels 100 feet long, constantly changing color as they float through space; and other pleasing fireworks.
 - 4.—Display of Twelve 1, 2, and 3 lb. Exhibition Rockets, fired from different points, so as to blend the beautiful Manhattan Beach tints.
 - 5.—Display of Three Magnificent Shells, 9 inches.
 - 6.—Special Device. "The Star of Columbia." A beautiful geometric device, representing a colored star 10 feet square, surrounded by columns of golden fire. The whole forming a piece 30 feet square when fired.
 - 7.—Display of Three 4 lb. Weeping Willow Rockets.
 - 8.—Display of Three 3 lb. World's Fair Rockets.
 - 9.—Display of Three 4 lb. Electric Rockets.
 - 10.—Display of Three 6 lb. National Streamer Rockets.
 - 11.—Display of Three 4 lb. Prismatic Torrent Rockets.
 - 12.—Display of Three 4 lb. Peacock Plume Rockets.
 - 13.—Display of Three 4 lb. Magnesium Star Rockets. The above seven novelties consisting of 3, 4, and 6 lb. Rockets. These goods in power, beauty, and effect, are the most wonderful display of Rockets ever shown.
 - 14.—Special Device. "The Blazing Sun." This is a center of whirling colors, surrounded by columns of fire, projecting in all directions.
 - 15.—Salvoe of Three 15 inch Shells, containing all the latest novelties and effects; invented for the 1900 Season at Manhattan Beach.
 - 16.—Special Piece. Formed by the discharge of Six Batteries of Pain's Chromatic and Golden Shower Candles, extending across the grounds, and fired simultaneously.
 - 17.—Batteries of Three Large Colored Saucissons. Giving effect by thousands of serpents twisting and gyrating in the air.
 - 18.—Ascent of Six Rayonet Tourbillons or Umbrellas of Fire. In ascent and decent.
 - 19.—Special Device. "The Grove of Jeweled Palms." This piece will extend 150 feet across the grounds. Gives a most pleasing effect, caused by the discharge of thousands of beautiful colored stars, intersected by columns of golden fire.
 - 20.—"The National Bomb." Sending up a shell, which on reaching its altitude opens red, changes to white, and finishes blue.
- In addition to the above numbers the following will be fired: Thirty-six 1 lb. Exhibit Rockets; Four 3 lb. Hanging Chain Rockets; Five 3 lb. Electrical Rockets; Three 6 lb. Weeping Willow Rockets; Three 6 lb. Festoon Rockets; Three 6 lb. Peacock Rockets; Four 8 lb. Pain Special Rockets; Three Largest Size Mines for mortar; Nine 3 lb. Shells; Five 15 lb. Shells; Six Batteries; Six Fountains.
- 21.—Grand Final Display of Four 15 inch World's Fair Bombs, showing the most beautiful colors and effects.
 - 22.—Special and Final Device consisting of the motto "Good Night". Surrounded with Batteries of varied colored Roman Candles on either side. The whole forming a beautiful piece, 30 feet long by 20 feet high.



VOLUME I.

MERRYMEETING PARK, BRUNSWICK, SEPTEMBER 11 TO SEPTEMBER 16.

NO. 12.

THE CASINO

DINING ROOMS

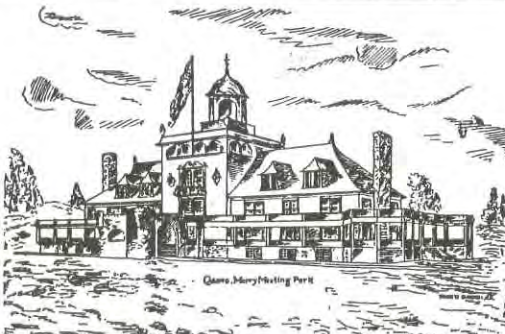
Open from 10 a. m. to 11 p. m.

Regular Table d'Hote Dinner 75 Cts.

Includes Poultry, Lobster Stew, choice of Chowders, three varieties of Fish, Lobster, Clams, Vegetables, Pies, Ice Cream or Sherbet, Tea or Coffee.

EUROPEAN MENU

Includes Steaks, Chops, Game, Broiled Live Lobster, Soft Shell Crabs, Clams in all Styles, Salads, Cold Meats, Pastry, Ice Cream, Sherbets, Etc.



Game, Merrymeeting Park

JAMES A. FULLER, Proprietor and Manager of Casino

Regular Shore Dinner 50 Cents.

With Broiled Live Lobster or Broiled Spring Chicken 75 Cents.
 Lobster Stew Clam Chowder Fish Chowder
 Steamed Clams, Drawn Butter
 Cucumbers Green Corn Stewed Tomatoes.
 French Bread, Pickles, Butter Thin Crackers.
 Plain Lobster, with Lettuce
 Fried Clams, Saratoga Chips
 Ice Cream, Sherbet Assorted Cake
 Tea, Coffee

...Refreshment Pavilion... NEAR THE AMPHITHEATRE.

Soda, Ice Cream, Salted Peanuts, Fruits, Pop Corn, Candy Kitchen. Try our "Merrymeeting" Kisses, manufactured every hour, twenty cents per lb.
 Our 10 Cent Cigar "MERRYMEETING"
 Our 5 Cent CASINO Cigar.

And All Refreshment Pavilions on the Park Grounds.

Best 10c.

CIGAR=

M. C. A.

At==

Wholesale

SWETT & CO.

CUT PRICE

DRUGGISTS

BATH

Merrymeeting Park, Amphitheatre,
 W. J. BRADBURY, Manager.

FOR ADVERTISING SPACE IN THIS PROGRAM
 APPLY TO

J. A. COOK, 87 High Street, Lewiston, Maine.
 J. H. DUNNING, Independent Office, Brunswick,
 F. B. NICHOLS, Times Office, Bath.

Printed at the office of The BATH DAILY TIMES.

J. W. GORMAN'S Cosmopolitan Company

Week of September 11
 Afternoon and evening

NEXT SUNDAY,
ELIJAH KELLOGG.

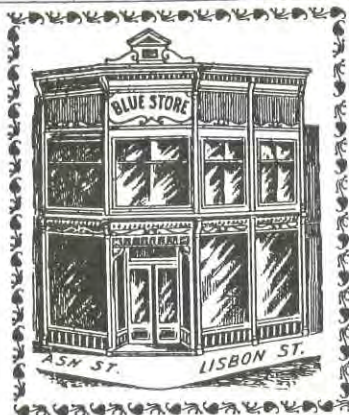
Sermon at 3 o'clock. "Say not,
 that the former days were better
 than these."



TRADE SUPPLIED BY

L. B. SWETT & CO.

BATH, MAINE



BLUE STORE, LEWISTON'S BIG CLOTHING STORE

Our new stock for FALL and WINTER has arrived. We show the finest and largest stock of MEN'S BOYS' and CHILDREN'S Clothing, Hats and Furnishing Goods ever shown by any one concern in Maine.

Sole agents for Lewiston of the famous NORTH STAR FUR COAT. We carry the largest stock of Fur Coats in Maine, a wholesale stock to select from.

If you want to see the largest variety of clothing at the very lowest prices call at the...

BLUE STORE LEWISTON'S LARGEST CLOTHING HOUSE

No Man Is Safe . . .

when an uncontrollable appetite for liquor holds him in bondage.

TREATMENT AT THE LEWISTON SANITARIUM REMOVES THE APPETITE

for Stimulants and Narcotics, and builds up the system that has been depleted by their use. Your friend can be a MAN AGAIN, Dr. Springer's method is SAFE, SURE, PERMANENT. Consult the doctors at the Sanitarium confidentially, if you wish, by mail.

Lewiston and Auburn Sanitarium,

342 Main Street, Lewiston.

Geo. C. Chase, D. D., LLD., President.

Geo. E. McCann, Esq., Treasurer.

Ara Cushman, H. L. Pratt, Hon. W. D. Pennell,

James A. Walsh, Rev. C. A. Knickerbocker,

Dr. N. A. Springer, Dr. A. I. Harvey, Directors

*The Shaw College
Business College
and Shorthand School*

Portland, Augusta, Bangor and Houlton, Maine
Actual Business by mail and Railroad. Only department in Telegraphy in Maine. Bookkeepers, clerks and stenographers furnished to business men. Free catalog. Tel. 881-3. F. L. SHAW, Pres., Portland, Maine

AT YOUR NEXT MERRY MEETING
DRINK

Preferred Stock

JAVA and MOCHA COFFEE
AFTER DINNER.

Packed in 1 and 2 Pound Cans. Ask Your Grocer.

PACKED BY

Martin L. Hall & Co., Boston,
Mass.

Programme.

The Gorman
Cosmopolitan Co.



OVERTURE, Prof. Eastman.

E. J. HOLLAND,

The Adonis Gymnast

BERT HALE,

Comedian, Vocalist and Dancer

ZARA TRIO,

Representing Soldiers and Peasants

of all Nations.

27 Changes of Wardrobe

Gilbert-THE CRAIGS-Emma

Novelty Musical Artists.

HINES AND REMINGTON,

In the Road Queen.

RESERVED SEATS 10 CENTS

M. Steinert & Sons COMPANY.

Wholesale and Retail Representatives
in the New England States for

Steinway & Sons,
Hardman, Gabler,
Gramer, Standard

and other First Class

PIANOS.

517 Congress Street, Portland, Me.

T. C. McGOULDRIC, Manager.

BRANCH OFFICE.

Y. M. C. A. Building, Bath, Me.

Builder's Hardware

Mechanic's Tools

Paints, Oils and

Window Glass

GEO. A. WHITNEY & CO.

235 Main St., Lewiston

DON'T FORGET

That BARBOUR'S Floral Cream is the thing to remove the tan and freckles from your face when you get home from the Beach. Sold by all first class druggists. Price 50 cts. a box. U. S. Postage (2c) Stamps received.

H. W. BARBOUR

268 Lisbon St.,

Lewiston, Me.

...ANNUAL CLEARANCE SALE...

IS STILL IN PROGRESS AT THE

Bon Marche Cloak Store

136 LISBON STREET, LEWISTON, MAINE, Next to the Old Banner Clothing House

Cloaks, Suits, Skirts, Shirt Waists, Silk Waists and Millinery

1804

1899

HEBRON ACADEMY

The fall term of Hebron Academy will open Tuesday September 12, 1899, for fourteen weeks. Healthful location, modern buildings, steam heated. Send for catalogue and information to Hebron, Me. W. E. SARGENT Principal
July 29, '99

Grand Wind Up Men's and Boys' Clothing

Marked below the edge of
Production

\$5.00 Suits	\$3.65
6.00	4.45
7.50	4.95
10.00	6.98
12.50	8.75
15.00	10.50
18.00	12.95
20.00	14.50

Bargains in every department.

THOMPSON BROS.

Bath's Spot
Cash Clothiers

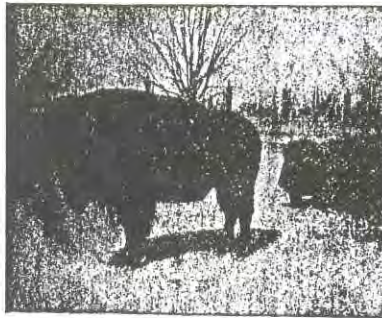
Wade & Dunton

The Large
Carriage...

Manufacturers

200 Carriages to select from, Pneumatic Carriages, Wheels and Carriage Stock. Also hard rubber tires applied.

Park Street, Lewiston, Maine



BISMARK AND SISTER.
King and Queen of the Zoo.

The Merrymeeting Zoo.

A leading attraction of the great pleasure parks of the world, such as the Zoological Gardens of London and Central Park of New York city, is the menageries of wild animals and curiosities of the animal kingdom. Zoological exhibitions attract the artist as well as the student of natural history. Children are always delighted with animals and grown folks, too, usually find a fascination in viewing the untamed creatures of the woods.

No expense has been spared in establishing the wonderful Merrymeeting Zoo, and the result is one of the largest and most remarkable exhibitions to be found on this continent. Ample space has been provided and there are exceptional facilities for observing the animals in the different cages. The visitor may walk freely around each cage and from one cage to another in the open air, thus seeing the animals to the best advantage. Each variety is described by neatly painted signs upon the cages, so that there is never any doubt as to the identity of the animals.

The large circular zoological building is the center of the most notable features of the Zoo. High wire fences radiate from this central building, forming large enclosures for the various animals.

THE HERD OF BUFFALOES.

Technically called the American bison, furnish a rare spectacle. Bismark, once a monarch of the western plains, now one of the few specimens of his genus either in or out of captivity, was captured by cowboys and had been exhibited at Cleveland and Denver previous to his coming to Merrymeeting. He is 12 years old and although he has seen several years of captivity he has not yet lost his natural ferocity. Julia, the cow buffalo is but three years old and was

Continued on Page 6.

DRINK

Pine Spring Ginger Ale..

No other Ginger Ale manufactured in this country like it. Acknowledged by thousands to be the best. Made with water that has no equal for purity—PINE SPRING.

Order From Your Druggist or Grocer.

Shipped from Factory in Six Dozen Cases or Barrels of 13 and 18 Dozen.

Pine Spring Water Co.,
BRUNSWICK, MAINE.

Do not forget
that the popular ...

NORDECK

Cigar is sold at the
Park Casino and Everywhere

TRY ONE. MANUFACTURED BY

W. H. TEAGUE, Lewiston, Me.

When in Lewiston
Visit the

New DRUG STORE

The Finest in
the State

BABCOCK & TEAGUE,
Registered Druggists,

71 LISBON ST. UNDER MUSIC HALL.
TEL. NO. 164-2 LEWISTON, ME.

Webber The...

Leading
Photographer.

Special attention given to every subject
Amateur's Supplies and Cameras for
sale. Lincoln Building.

G. B. WEBBER, Brunswick, Maine

...ANNUAL CLEARANCE SALE...

IS STILL IN PROGRESS AT THE

Bon Marche Cloak Store

136 LISBON STREET, LEWISTON, MAINE, Next to the Old Banner Clothing House

Cloaks, Suits, Skirts, Shirt Waists, Silk Waists and Millinery

1804

1899

HEBRON ACADEMY

The fall term of Hebron Academy will open Tuesday September 12, 1899, for fourteen weeks. Healthful location, modern buildings, steam heated. Send for catalogue and information to
Hebron, Me. W. E. SARGENT
July 29, '99 Principal

Grand Wind Up Men's and Boys' Clothing

Marked below the edge of
Production

\$5.00 Suits	\$3.65
6.00	4.45
7.50	4.95
10.00	6.98
12.50	8.75
15.00	10.50
18.00	12.95
20.00	14.50

Bargains in every department.

THOMPSON BROS.

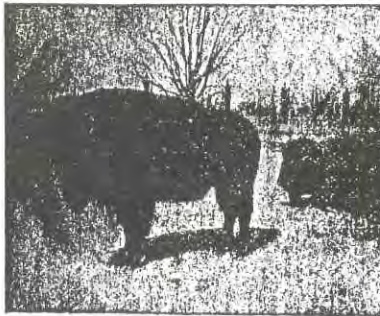
Bath's Spot
Cash Clothiers

Wade & Dunton

The Large
Carriage...
Manufacturers

200 Carriages to select from, Pneumatic Carriages, Wheels and Carriage Stock. Also hard rubber tires applied.

Park Street, Lewiston, Maine



BISMARK AND SISTER.
King and Queen of the Zoo.

The Merrymeeting Zoo.

A leading attraction of the great pleasure parks of the world, such as the Zoological Gardens of London and Central Park of New York city, is the menageries of wild animals and curiosities of the animal kingdom. Zoological exhibitions attract the artist as well as the student of natural history. Children are always delighted with animals and grown folks, too, usually find a fascination in viewing the untamed creatures of the woods.

No expense has been spared in establishing the wonderful Merrymeeting Zoo, and the result is one of the largest and most remarkable exhibitions to be found on this continent. Ample space has been provided and there are exceptional facilities for observing the animals in the different cages. The visitor may walk freely around each cage and from one cage to another in the open air, thus seeing the animals to the best advantage. Each variety is described by neatly painted signs upon the cages, so that there is never any doubt as to the identity of the animals.

The large circular zoological building is the center of the most notable features of the Zoo. High wire fences radiate from this central building, forming large enclosures for the various animals.

THE HERD OF BUFFALOES.

Technically called the American bison, furnish a rare spectacle. Bismark, once a monarch of the western plains, now one of the few specimens of his genus either in or out of captivity, was captured by cowboys and had been exhibited at Cleveland and Denver previous to his coming to Merrymeeting. He is 12 years old and although he has seen several years of captivity he has not yet lost his natural ferocity. Julia, the cow buffalo is but three years old and was

Continued on Page 6.

DRINK

Pine Spring Ginger Ale..

No other Ginger Ale manufactured in this country like it. Acknowledged by thousands to be the best. Made with water that has no equal for purity—PINE SPRING.

Order From Your Druggist or Grocer.

Shipped from Factory in Six Dozen Cases or Barrels of 13 and 18 Dozen.

Pine Spring Water Co.,
BRUNSWICK, MAINE.

Do not forget
that the popular...

NORDECK

Cigar is sold at the
Park Casino and Everywhere

TRY ONE. MANUFACTURED BY

W. H. TEAGUE, Lewiston, Me.

When in Lewiston
Visit the

New DRUG STORE

The Finest in
the State

BABCOCK & TEAGUE,
Registered Druggists,

71 LISBON ST. UNDER MUSIC HALL.
TEL. NO. 164-2 LEWISTON, ME.

Webber The...

Leading
Photographer.

Special attention given to every subject
Amateur's Supplies and Cameras for
sale. Lincoln Building.

G. B. WEBBER, Brunswick, Maine

ELECTRICS STOP OPPOSITE

DAGGETT'S Dyeing and Cleansing ESTABLISHMENT

Please Remember that when Visiting Lewiston.

If you want a new dress skirt of good material and make, yet cheap call at...

THE FASHION

They are our own make and made of goods you will not find in the factory or shop-made skirt.

We have a fine make corset, the "P. N.," fits like a glove. The newest designs in Combs and notions of every description, new goods for fancy waist fronts that are exquisite. Call and examine, no trouble to show goods.

C. V. SMITH, Lewiston, Maine

Newly Furnished and Steam Heat, Electric Bells
Fitted Throughout Hot and Cold Baths

Maine Central...

LISBON FALLS MAINE

O. L. SMALL & SON
PROPS.

SHORE DINNERS SUNDAY a Specialty
from 1.00 to 3.00 p. m.—Fifty Cents



S. P. ROBIE
Men's Furnishings
Athletic Outfits
Bathing Suits for Men and Women
LEWISTON, MAINE

KENNEBEC STEAMBOAT CO.

FOR BOSTON!
SUMMER ANNOUNCEMENT.

Daily service except Sundays, commencing Monday, June 13, 1899, steamers will leave Gardiner daily, except Sunday at 3.35, Richmond 4.30, Bath 6 and Popham Beach at 7 for Boston. Returning will leave Boston every evening except Sunday at 6 o'clock, arriving in Bath the following morning in season for early connections to all points reached by Steam and Electric Railways. FARE between Augusta, Hallowell, Gardiner, and Boston, \$1.75 or \$3.00 round trip, Richmond \$1.50, round trip \$2.50, Bath and Popham Beach \$1.25, round trip \$2.00. These steamers are staunch and in every way fitted for the safety and comfort of passengers. Meals served on board immediately after leaving Bath or Boston. Staterooms are large and elegantly furnished. Price \$1.00 except for a few extra large ones.

Commencing June 29, 1899, the new steamer Lincoln will leave Wiscasset on Tuesdays and Thursdays at 4 p. m. and Boothbay Harbor at 6.30 p. m. for Boston. On Sunday she will leave Wiscasset at 2 p. m., Boothbay Harbor 3.30, Bath at 6 and Popham Beach at 7 p. m. for Boston. Returning will leave Boston, Monday, Wednesday and Friday evenings at 7.00 for Boothbay Harbor and Wiscasset, DIRECT arriving in season to connect with early morning trains on Maine Central and Wiscasset & Quebec R. R. Fare from Wiscasset and Boothbay Harbor \$1.50, round trip \$2.50.

G. C. GREENLEAF, Agent, Bath.
JAMES B. DRAKE, Pres.

LEWISTON Business College

149 LISBON ST., LEWISTON, ME.
Complete BUSINESS and SHORTHAND Courses
Send for Catalogue.

N. E. FANKIN, PRINCIPAL.

Fall Term Opens September 11, 1899.

Continued from Page 3.

bred in captivity. The two yearlings came from Adrien, Mich., where they were raised.

THE MOOSE AND THE ELKS.

The fact that moose are hunted in the great forests of the state makes them a no less remarkable sight for it is very uncommon to find them in captivity. The specimens exhibited are all young ones. The largest is three years old and was secured near Moncton, N. S. This moose is one of the finest ever exhibited alive. He was purchased in Boston at the Sportsmen's Show by Mr. Gerald, General manager of the L. B. & B. St. Ry. The other four, three females and one male, were captured by the Canadian official game wardens and guides at Deux Rivieres, Ont.

The similarity between the elks and the moose in form, size and other characteristics makes it necessary to look closely to discover the difference. The two older elks were bought several years ago in Michigan and they have bred three others.

THE CARIBOU AND THE DEER.

The caribou are more rare even than the moose. The specimen at Merry-meeting is a fine one, and it is the only caribou in captivity in the United States. It is one of the handsomest animals in the park, is five years old and was captured in the province of Quebec, a mate for him was secured, but it died in transportation. Efforts are now being made to obtain another.

The herd of deer is a large and interesting one. These animals are all natives of Maine. Their grace and beauty makes them a charming attraction. While apparently quite contented they would doubtless prefer the freedom of their native wilderness with the risk of the hunter's bullet to this life of ease and captivity.

The white deer which is found in a separate enclosure with an antelope for a companion is a rare sight. This animal was captured in Nova Scotia and is the only real white deer in captivity. It lives very peaceably with the antelope from Wichita, Kansas.

The antelope is a sort of intermediate between the deer and the goat. He is remarkable for his fleetness and grace.

OX, SHEEP AND GOATS.

On the opposite side of the building there are some examples of extreme size in domestic animals. First and foremost is the big five-year-old steer that came all the way from Utah. He was about twice the size of an ordinary calf at birth and without special feeding grew to his enormous size. He now girls 10 feet, weighs over 3200 lbs., and is still growing.

The sheep pen contains some thoroughbred Oxford-Downs, among them the celebrated buck, "Hilton," probably the largest sheep living, he having attained the weight of 405 lbs. Besides the Oxford-Downs there is a fancy Lamberett sheep which is very rare in this country.

The goats are on the opposite side of the walk from the sheep. They are mountain Angoras and came from Nebraska. Their kids are as playful and cute as other kinds of kids.

Some very curious creatures that are nameless occupy a pen next to the deer. These animals are supposed to be hybrids. They were found on a western island where nothing but deer and sheep were kept.

THE ZOOLOGICAL BUILDING.

Inside this circular house may be seen the stalls in which the animals ob-

Hartleb & Cheltra, General Bottlers.

MANUFACTURERS OF

Ginger Ale and Mineral Waters

Telephone Connection
P. O. Box 1136.

Bath, Maine.

WHEN IN PORTLAND VISIT...

Hotel Temple

Portland's New
and Handsome
Hostelry...

Equipped with all modern improvements: Gas and Electric Lights throughout, Electric Bells, Steam Heat, Elegant Baths, Elegant Furnishings in Office and Corridors. The public is cordially invited to visit the hotel and inspect apartments. A half-minute's walk to all street car lines. Rates, \$1.50 and \$2.00 per day. Every courtesy and attention shown to patrons. Special rates to parties desiring board, also to theatrical people. Opened December 21, 1898

TELEPHONE CONNECTION JOHN A. CLARITY, Prop
20 and 22 TEMPLE ST.



EASTERN STEAMBOAT CO.

Steamers leave daily
(except Sunday) at 8.30
a. m. and 2.30 p. m.,

(Sunday at 9.00 a. m.) for...

BOOTHBAY

ADJACENT ISLANDS
and PEMAQUID

Returning leave Pemaquid at 1.15 p. m., Boothbay at 2.30, arriving at Bath about 5.00 p. m.

Low Rate...

EXCURSIONS

On Tuesday, Thursday and Saturday during July and August. Leave Bath at 11.40 a. m., returning leave Boothbay at 2.30 p. m.

Fare for the Round Trip 50c

ELECTRIC LIGHTS.

STEAM HEAT

Exchange Hotel,

E. Murch & Son, Proprietors.

Chapel St., next to B. Peck Building

Eben Murch,
Harry T. Murch,

LEWISTON, ME.

When in Portland stop at...

Swett's Hotel

CHAS. S. SWETT, Prop.

17 to 27 Temple St., Portland, Me.

Rates \$2.00 per day

Open December 1-91.

FRED H. WHITE

TAILOR and
DRAPER...

125 MAIN STREET LEWISTON, MAINE

The Best Cigar
of the Year

"ARTIE"

For Sale by All
Dealers

THE FAVORITE...

3 C's

Pepsin Gum

Is for sale at the restaurants and all the stands. Use it and enjoy the satisfaction of having the very best. For sale on all trains and steamboats.

Curtis & Son Company

SOLE MAKERS...

tain shelter. Grouped about the big central space are cages of monkeys, white mice, beautiful cockatoos and rattlesnakes. There are also some remarkable mounted specimens. Two large moose with magnificent antlers, a polar bear, a boa constrictor and an antelope constitute the chief groups.

In connection with these mounted specimens, it is appropriate to mention "King William," the stuffed horse which stands out of doors beyond the rabbit pens. This horse was bred in the West, and sold for \$4000 when 5 years and 5 months old. He was the largest horse in the world standing 22 hands high and weighing 3027 pounds. He died at the World's Fair in 1893.

AMONG THE CAGES.

A description of all the smaller animals enclosed in the cages that cover a large area towards the park entrance would be of less interest, but they furnish many wonderful sights and no end of amusement to the young folks.

The two black bears "Major" and "Josie" are prime favorites with everybody. They have very comfortable quarters and live happily. "Major" was captured at Mt. Katahdin while Josie has been a pet for several years, owned by Supt. Meloon of the L. B. & B. St. Ry.

The fierce timber wolves from Utah and the pair of prairie wolves from Kansas never fail to attract attention.

The visitor may ramble at will among the cages. The peacocks with their splendid plumage will welcome all admiring looks. The horned owls will stare and occasionally blink with their wondrous eyes which are blinded by the light.

The proud eagles stand in stately majesty and scarcely acknowledge the presence of their beholders. The sea turtles from Cuba, and alligators are equally oblivious of the spectator.

But the big family of red foxes, the frisky squirrels, the multitude of coon rabbits, common rabbits, guinea pigs and prairie dogs never fail to do their share for the entertainment of the visitor.

The crows and the hawks, the raccoons and the coon cats, the woodchucks and the porcupines, especially the white porcupine, which is a rare animal, will each have some degree of interest.

And, last, but not least in importance is a wild cat from Northern Maine, a beautiful creature and as fierce as she is beautiful.

He—This shoe doesn't fit. Try a bigger one.

She (severely)—No, sir; bring me the same size a little larger.—Denver Sun.

Pearl—Did you see that shark they advertised down at the beach?

Ruby—I saw the hotel landlord, if that's what you mean?—Chicago News.

A Telltale Countenance — "George, your dog ate up that ragtime song you bought yesterday."

"I thought he looked as if he had."

"Had what?"

"Been chewing the rag."—Cleveland Plain Dealer.

Maine's Greatest STORE

We are selling a newly
received lot of...

4 YARD Wide

LINOLEUM

CARPET

At Only...

50c

Per Square Yard

Actual Value 85c

Send for Samples

"We pay freight"

Orren Hooper's Sons

Portland, Maine

HODGKINS, FOSS & ADAMS,

MANUFACTURERS AND DEALERS IN

Doors, Windows, and Blinds.

Door and Window Frames, Cedar Shingles.

Nos. 3 and 7 Lower Main St.,

and Cross Canal, LEWISTON, MAINE.

ALBERT E. NYE

ARTIST... PHOTOGRAPHER

Best of Work at Reasonable Prices. All Children sitting for the next thirty days will receive a ticket good for fifty cents discount on one dozen photos. CAMERAS—4x5 Hand Cameras \$4.50, Extension Tripods 95c. DEVELOPING and PRINTING.

138 Lisbon St., cor. Ash, Lewiston
Cars Pass the Door

MERRYMEETING.

Preparations for Summer Season of 1901 Rushing.

CASINO TO OPEN LAST WEEK IN MAY.

First Performance at the Amphitheater on June 10.---Improvements That Are Making on the Grounds.

Preparations are well advanced for the grand summer campaign at Merrymeeting Park. The Casino doors will be opened to the public the latter part of this month under the management of Elmer E. Woodbury, the well-known hotel and restaurant man who does an extensive business for Bangor and Portland. F. E. Hall of Brunswick will be on duty at the Casino, assisted by Mr. Ferrin of Boston.

Improvements about the grounds of the Park are well underway and a new dam is being constructed in place of the old one which was not of sufficient strength.

The zoological department will be very attractive this season. One of the latest arrivals in this department is a baby buffalo, called Bismark Jr. The monster mud turtle from Abagadassett River will also claim considerable attention.

Negotiations are in progress for a baboon with a two months old baby.

The beautiful gardens which aid largely in making the Park present an attractive appearance are being placed in readiness for the summer. Manager John Dunning at the Amphitheatre has secured an entertaining list of attractions, beginning June 10. It is the intention of Manager Dunning to make the theatre a leading feature of the entertainment line at the Park. Patrons will receive the best there is.

Work is well advanced on a new octagon rustic pavillion which will take the place of the refreshment tent used near the theatre last year. This building will add much to the picturesque beauty of the grounds.

Already this season many Bath and Brunswick people have visited the Park and every pleasant day brings larger crowds.

The grounds will be better lighted than ever before by an additional supply of arc lights which have been placed in position in the theatre and above the main entrance.

The bridge which extends over the railroad track, and the station near by, are being decorated by a crew of painters.

The amusement hall on the main floor of the Casino is being fitted with a long lunch counter and will contain many small tables where guests can regale themselves with a "white Mountain lunch."

It is the intention of General Manager Masson to furnish excellent accommodation in transportation to and from the Park and everything possible will be done for comfort of the many thousands who will be guests at Merrymeeting during the summer.

FIRST FIELD DAY

.. OF ..

The Saturday Club,

BRUNSWICK, MAINE,

.. AT THE ..

Merrymeeting Park Casino,

September 7, 1899.

GUESTS OF THE DAY

MISS LUCIA H. CONNOR,

MISS INEZ A. BLANCHARD,

MRS. ALICE FRYE BRIGGS,

MRS. GEORGE D. ARMSTRONG.

COMMITTEE.

Miss Laura A. Hatch, Mrs. Byron Stevens,
Mrs. F. N. Whittier, Mrs. F. O. Robinson,
Miss Mae Stanwood.

PARK NOTES.

L. B. & B. Street Ry. Officials.

A. L. SHAW, Bath,	President
I. C. LIBBY, Waterville,	Treasurer
A. F. GERALD, Fairfield,	Gen'l Manager
I. L. MELOON, Brunswick,	Gen'l Supt.
F. C. FARR, Lewiston,	1st Div. Supt.
W. P. HUEY, Lisbon Falls,	2nd " "
W. F. MITCHELL, Brunswick,	3rd " "
CHAS. GAHAN, Bath,	4th " "

Merrymeeting Park Officials.

F. M. BLAISDELL,	Landscape Artist
W. J. BRADBURY,	Manager of Theatre
C. H. STUART,	Supt. of Grounds

At the Casino dinner is served from 11 30 a. m. to 8 o'clock p. m. European plan menu from 11 a. m. to 11 p. m.

Don't lose or destroy this programme. Take it home with you and let your friends read it.

The view from the cupola above the roof of the Casino is one of the choice attractions of the park. Easy stairways lead to the tower where a few moments ascent of the spiral staircase gains the topmost floor and a grand panorama is opened to the view. The noble Androscoggin, the bridge at Brunswick, the Islands of Merrymeeting Bay and the beautiful Park are the chief points of interest.

The Park Now

The Park closed not because of any one event, but because of a series of changes. From the day of its conception, it was a losing proposition. Amos Gerald had grand ideas, but the population of Brunswick was too small to support financially such an impressive park. Even with the trolleys from Lewiston and Portland (a three or four hour round trip) there just were not enough people. The growing popularity of the automobile also began to take its toll on the trolleys. Automobiles didn't have to follow tracks or timetables and people became less dependent on the "electrics." The park's audiences were now also going to the movies.

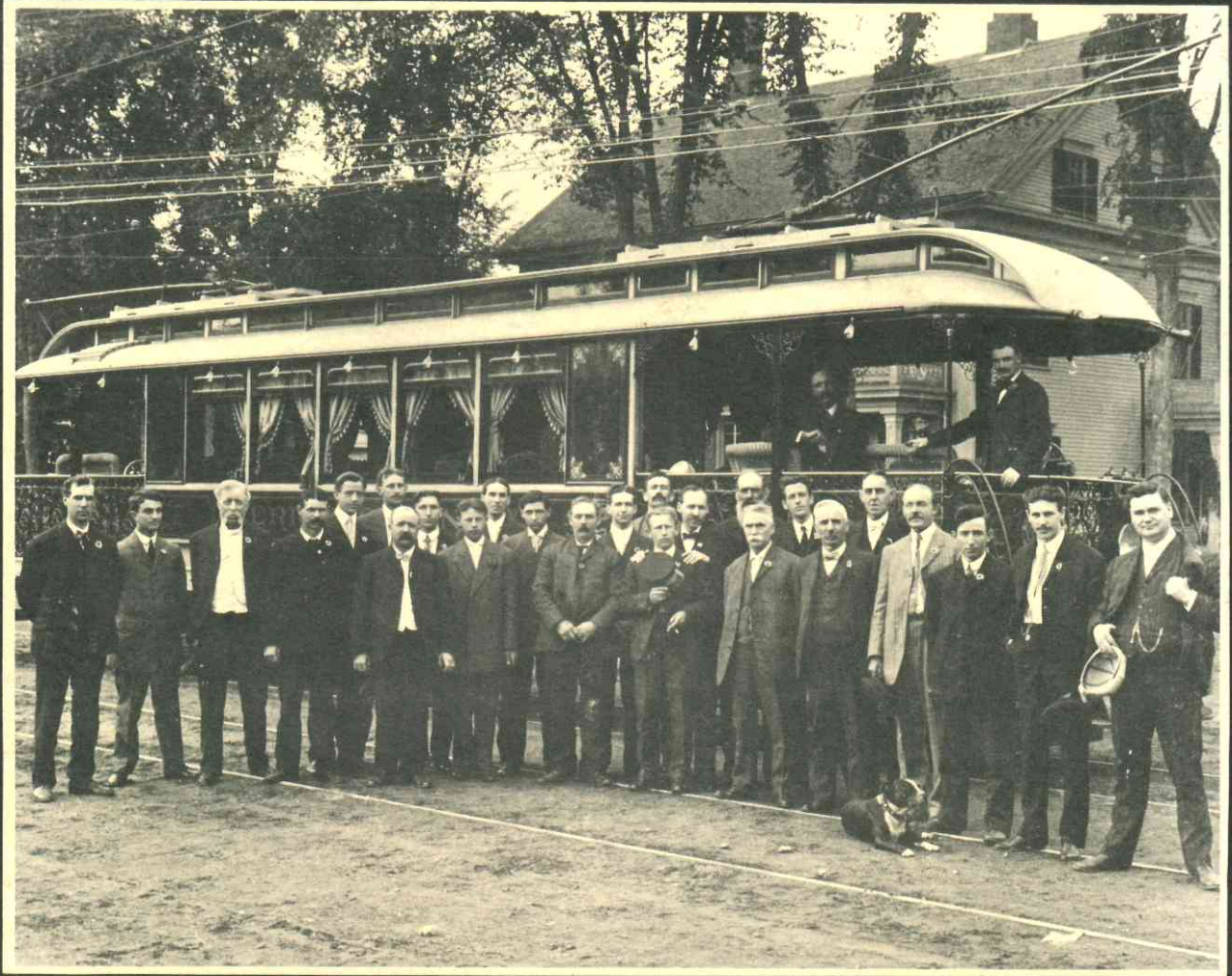
The park officially closed after the 1906 season. The animals were sold and whatever else could be salvaged was taken by the trolley company with the grounds left to picnickers until 1914. The land was sold first to Rupert Baxter and Charles Erswell, then to Arthur Barrett, followed by J. J. Bursnell who, in turn, sold it to its present owner, Earl Ormsby, Sr. The casino was eventually vandalized and torn down. The stones from the foundation and castle went into other buildings in the area. One of the out-buildings is now a garage belonging to Margaret Erswell of Pleasant Street, Brunswick.

The main entrance ramp to the park was about one hundred feet to the right or east of the present location of Tibby's Motor Sales building. A secondary entrance road crossed the tracks at grade level where the entrance to the cement plant and auto salvage yard is presently located. The casino was located on top of the hill on the northern side of new Route 1, where a white mobile home now sits. The series of duck ponds were formed by damming the depression behind it. New Route 1 splits the park in two, passing over what would have been the zoo and amphitheater.

I have been given a reflector from one of the arc lights by Earl Ormsby, and Margaret Erswell has a few of the folding benches, on one of which is printed "MERRYMEETING PARK." Besides these few reminders there is not much tangible evidence left from its nine years of operation. But lest we be overcome by nostalgia, the title of the sermon delivered by Elijah Kellogg in the amphitheater, that September day ninety years ago, still speaks to us today: "Say not that the former days were better than these."

Back Cover Photo

The Merrymeeting Parlor Car is shown at the intersection of Maine and Pleasant Streets, with Dr. Elliott's house in the background. The car was built in 1899 by the Brill Company, was forty feet long and cost \$7,000. It featured leaded glass windows and wrought iron grill work on each of its open ends. The seats were green velvet and rattan and the interior was paneled with fine wood. It was used on special occasions and could be rented for parties. Amos Fitz Gerald is the man seated in the car.



The Merrymeeting Parlor Car